

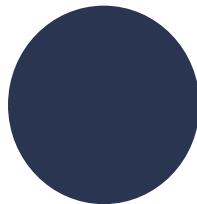
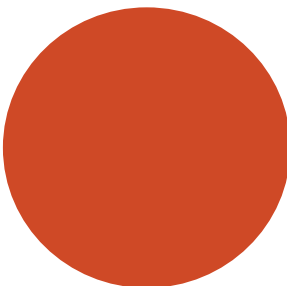


# ESPERANCE

## Wildflower Festival

### ART TRAIL AND EVENT GUIDE

22nd - 26th September 2020



Presented by



Esperance Wildflower Society



Esperance Community Arts



Anglican Parish of Esperance

# WELCOME MESSAGE

**HON PAUL PAPALIA CSC MLA, MINISTER FOR TOURISM  
AND  
HON ALANNAH MACTIERNAN MLC, MINISTER FOR REGIONAL DEVELOPMENT**

The McGowan Government is a proud sponsor of the Esperance Wildflower Festival through its Regional Events Scheme.

The scheme was devised as a way for the Government to support smaller and emerging events in regional Western Australia to boost tourism, increase community vibrancy and participation, and develop regional areas.

The Regional Events Scheme plays an important role in positioning Western Australia as an exciting destination to visit and a great place to live by showcasing and promoting a region's unique and diverse attractions.

Seventy-seven regional events across the State have been funded through the 2020-21 Regional Events Scheme. The round includes the Regional Aboriginal Events Scheme with a funding pool of \$150,000 exclusively allocated to events delivering Aboriginal activities and experiences.

Tourism is a key part of the Government's plan to diversify the economy, create jobs and develop business opportunities, especially in regional Western Australia.

Events play an important role in this plan with the Government sponsoring a range of sporting, cultural, arts and culinary events across the State, through Tourism WA, to attract more visitors, encourage them to stay longer, disperse further and do more while they are here.

We hope everyone enjoys the event and takes the time to explore the Goldfields-Esperance region.



**HON PAUL PAPALIA CSC MLA  
MINISTER FOR TOURISM**



**HON ALANNAH MACTIERNAN MLC  
MINISTER FOR REGIONAL DEVELOPMENT**

# ESPERANCE WILDFLOWER FESTIVAL 2020



The Esperance Wildflower Festival celebrates the diversity of native flora in our region. Variations over millennia, in climate, soil composition, and competition with other plants and animals have shaped the evolution of the species we see today. Plants have not been alone on this evolutionary journey. Birds have evolved alongside them, interacting in a variety of ways. Some of these work to the mutual advantage of both groups - honeyeaters receive nectar from flowers and in return act as pollinators, moving pollen between plants. Others are more neutral - plants provide birds with places to shelter and to nest. Finally, there are interactions that operate to the disadvantage of plants - cockatoos eat large numbers of Banksia and Hakea seeds. These different interactions are reflected in this year's Festival theme: **Flowers & Feathers: Friends or Foes.**

The Esperance Wildflower Festival began in 1990 as a display of wildflower arrangements organised by the Anglican Parish. It has also undergone an evolutionary journey, on a much more rapid timescale! It has grown and changed to accommodate the interests of both visitors and local community groups, taking on a more scientific focus, incorporating a range of art forms, and encouraging the involvement of children through educational activities.

The 2020 Festival builds on and extends the partnerships developed in 2019. This year we are pleased to also be partnering with the Shire of Esperance who have provided access to the Esperance Civic Centre, increasing the space available for displays. The Shire has also supported the production of a set of street banners.

An organising committee consisting of representatives from the Esperance Wildflower Society, Esperance Community Arts and the Anglican Parish has taken responsibility for planning and coordinating the Festival. The Parish has continued to provide catering services and a venue, the Wildflower Society has managed botanical aspects including the collection, identification and display of plant specimens, and Esperance Community Arts has extended the scope of the Festival by sourcing funding for a range of arts projects and marketing initiatives.

Welcome to the Esperance Wildflower Festival 2020. We hope that you will find much to enjoy, and that you will share in our wonder and enthusiasm for the floral diversity that surrounds us.

*Esperance Wildflower Festival Committee*

# ESPERANCE WILDFLOWER SOCIETY



The Esperance Wildflower Festival began by displaying wildflowers collected by local farmers. The emphasis then was on making attractive displays rather than conveying scientific information. More recently, Esperance Wildflower Society has coordinated the wildflower display and introduced talks and activities for school groups.

Flower specimens are collected from across the Esperance Shire by licensed collectors. The number of species on display has gradually increased, and it has exceeded 500 in recent years.

Where possible Nyungar names are included on labels along with scientific names and common names.

The composition of the display differs each year depending on seasonal factors and the accessibility of some locations. Collectors don't just focus on the most spectacular flowers – including all sizes, colours and forms demonstrates the diversity of our local flora.

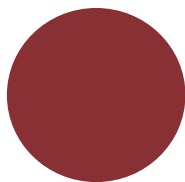
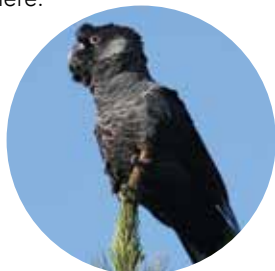
Over 2,500 species occur in the Shire of Esperance. Many are not in flower at Festival time, so the display represents just a part of the actual diversity.

This year, the Shire of Esperance has generously allowed the use of the Civic Centre to house the display of named species. This will allow visitors more room while looking at the display of flowers and provide more space in the adjacent Anglican Parish Hall for the enjoyment of food and company.

The 2020 Festival's theme is Flowers & Feathers: Friends or Foes. The focus will be on the many and varied relationships between plants and birds and will include photographs depicting some of these interactions.

A weed section will also be included to assist members of the community to recognise them as non-native species.

Members of the Esperance Wildflower Society will be present to answer questions. We look forward to meeting you there.



*Act-Belong-Commit*

## ESPERANCE WILDFLOWER FESTIVAL

# ART EXHIBITION & COMPETITION

Artists living in the Esperance region were again invited to submit artworks responding to the theme of 'Nature, Bush, Belonging'. This compliments the overall Festival theme for 2020 of 'Flowers & Feathers: Friends or Foes', a celebration of the relationships between local plants and bird species.

This year the competition has a new category for group entries, and although the response has been impacted by restrictions associated with COVID-19, we are hoping this will become a popular category in the future.

We also have Judges' Awards this year for the individual and group categories. Thank you to the Esperance Wildflower Society for donating the Mina Crisp Prize for an individual entry and to Peter Rundle and Colin de Grussa from the Nationals Party for donating the prize for a group entry. The People's Choice Awards will be presented in all three categories thanks to sponsorship from Healthway / Act-Belong-Commit.

The school entries will again be displayed in the Anglican Church during the Festival, while the entries in the individual and group categories are displayed in local shops throughout the CBD from Monday 7th September.

We extend a big thank you to everyone involved in the three group entries, to all the entrants in the individual category and to all the staff and students who have contributed to the schools category. Thanks also to all the local businesses and organisations who are hosting artworks.

### How to vote for the People's Choice Awards

Voting slips can be submitted at participating venues and at the Festival venue before 4.00pm on Friday 25th September. Voting slips for the best school display can be completed and submitted in the Anglican Church.

You are welcome to vote multiple times for different artworks (one vote per person per artwork). An art trail map showing the locations of all the entries in the individual and group categories is available on the Wildflower Festival website and from participating venues.

# INDIVIDUAL ENTRIES

**P** Eligible for People's Choice Award

**J** Eligible for Judges' Award

**\$** Available for Sale



## 1 TAG, YOU'RE IT! Judy Barr

Our beautiful magpies enjoy our gardens until the magical moment when they decide it's time to defend their nests. *Tag, You're It*, is a humorous look at magpies engaging with us in our shared space.

**P** **\$**



## 2 MULLA MULLA Elaine Campbell

Embroidered picture.

**P**



## 3 EMU BUSH Elaine Campbell

Embroidered picture.

**P**



## 5 ONE MINUTE THERE Caitlyn Edwards

This piece features a Western Spinebill surrounded by silhouetted grevilleas. Painted with Indian ink and hand-me-down watercolours on thrifted paper in a second-hand frame. The use of masking fluid made for some fun effects.

**P** **J** **\$**



## 6 HONEY, YOU SHOULD SEE ME IN A CROWN Caitlyn Edwards

A Great Eastern Egret sporting a native wildflower crown. This piece was painted using old sample pots with details done in a second-hand gouache. After overthinking how to paint flowers to the point of pain, the artist opted to create them using embroidery thread, which proved challenging but satisfying.

**P** **J**



## 7 FRIEND: NEW HOLLAND HONEYEATER Dorothy Henderson

Acrylic painting of a New Holland Honeyeater feeding on a Banksia, serving as a pollinator in the process. An extract from a nature journal.

**P**



## 8 BLACK-RED TAILED COCKATOO Judy Jose

This mosaic allowed me to show off the detail of the black cockatoo as it perched on a limb looking for food.

**P**



## 9 BANKSIA & GOULDIAN FINCHES Judy Jose

I like photographs of birds and I wanted to make a mosaic artwork that captured these finches feeding off Banksias.

**P**





# 10 BUSY BIRDS AT MONJINUP

Carole King

Wonderful walking through the paperbarks with birds flying around everywhere.



# 11 SILVER

Marcia Koulbanis Leonard

Silvereyes with Esperance Tea Tree also known as Silver Tea Tree/Coast Tea Tree. Pencil, graphite, charcoal, and watercolour on Japanese washi paper with recycled/repurposed embroidery.



# 12 REBIRTH

Graham Mackenzie

Fractal burning technique on Camphor Laurel timber covered with resin.



# 13 HIDE AND SEEK AMONGST THE KANGAROO PAW

Laetitia Muller

This upcycled mixed media artwork started off as an acrylic pour. The colours inspired the playful symbiosis between the Western Spinebill Honeyeater and the Kangaroo Paw at sunset. The long flower stalks invite a tidbit whilst hiding their need of this very tiny feathered friend for pollination and survival.



# 14 "CHWIKUP-CHWIKUP" INVITES WHITE CHEEKED HONEYEATER TO BANKSIA FEAST - Laetitia Muller

Thomas River's coastal woodland inspired recycled oil fine-art piece. Complimentary purple-blue hues contrasting with bright palettes creates a playful-and-rhythmic depiction of the honeyeater's nectar-and-bug-feast. Sweeping brushstrokes of Banksia leaves and optical mixing with wet into wet were finished with dry brush feathering to create the finer details and creating depth.



# 15 BREMER BAY

Bruce Malloch

Pastels are a lovely medium to use when painting wildflowers. This painting is of the coastal wildflowers around Bremer Bay.



# 16 WILDFLOWER NYNGHAM STATION

Bruce Malloch

I prefer working in pastels as the rich colours enabled me to capture the everlastings on the station so well.



# 17 CONNECTIONS

Eimear O'Connor

Eimear O'Connor's work uses flame-worked botanical sculptures to explore everyday cycles and how we interconnect within them. The intricacy of these light and positive pieces attempts to coerce the viewer into focusing on the bright side of life.



# 18 VISITORS TO THE VERANDAH

Sally Proudfoot

Watercolours, lead drawing and ink pen.



# 19 HOME AMONG THE GUM TREES

John Richardson

Restless fly catcher feeding its young at Myrup.





**20 FADING MINER**  
*John Richardson*

Miner bird collecting nectar from eucalyptus flower in front yard Esperance.

P \$



**21 RUSTIC RURAL**  
*Geoff Smith*

Oil and acrylic.

P



**22 HEAD OF THE BIGHT**  
*Geoff Smith*

Acrylic on canvas board.

P



**23 BIRDS IN THE BANKSIA**  
*Naomi Stanitzki*

Stars, New Holland Honeyeaters, Banksia speciosa, drawing on canvas. Materials: canvas, ink, tea, felt tip pens (permanent).

P J \$



**24 THE MEETING PLACE**  
*Natalie Voigt*

Mosaic bird bath, native wildflowers, orchids, Templetonia and New Holland Honeyeater.

P J \$



**25 SCATTERING THE SEEDS**  
*Sheryl Waideman*

Small driftwood birds, scattering seeds/eating bugs, movement of seeds to other places.

P J



**26 PRUNING OR DESTROYING**  
*Sheryl Waideman*

Black cockatoo pruning the native bush, Banksia.

P J



**27 BRUSH YOUR BOOTS**  
*Tanya Watson*

Acrylic on canvas painting featuring the foe: dieback and its potential impact at a popular walking trail at Lucky Bay, Cape Le Grand. It also serves as a reminder to 'brush your boots' and prevent the spread.

P J \$



**28 HUNGRY & HIDDEN**  
*Rod Western*

Print montage, four birds with different methods of survival.

P J \$



**29 BIRD FEEDING**  
*Rod Western*

A2 print of bird feeding.

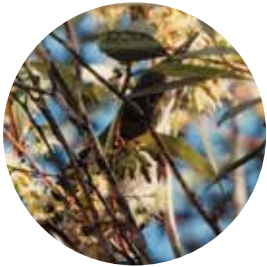
P J \$



### 30 WESTERN SPINE BILLS

*Gillian White*

Wool hanging made of reject alpaca fibre indicating male and female Western Spinebills with some of the flora they obtain nectar from and pollinate in return, homespun.



### 31 HONEYEATER IN BLOSSOM

*Julie Wyllie*

Honeyeater in the blossom enjoying a mouthful of nectar.



### 32 NANKEEN NIGHT-HERON

*Julie Wyllie*

Nankeen Night-Heron roosts in the tree late in the evening, makes a loud sound when it takes off.



### 33 THE OTHER SIDE OF THE FENCE

*Flora Yetman*

Felted view of fence (wire) one side (embroidered detail), grazed other side of the bush.



### 34 BRINGING IN THE SPRING

*Flora Yetman*

Felted wattle in bloom.



## GROUP ENTRIES

**P** Eligible for People's Choice Award

**J** Eligible for Open Judges' Award



### 1 UPCYCLED ARTWORK

*Boucher Family*

Comprised of upcycled genie ants into a shawl; upcycled dress into an apron; upcycled denim shorts & scrap fabrics into a bag – white cheeked honeyeater; Recycled wool made into a sculpture – Australasian Grebe on its nest (eggs inside too).



### 2 PLUMITO NESTO

*Esperance Home Care*

The name for our entry comes from a language known as Esperanto and means 'Feathered Nest'. Our Craft Group clients and supporting staff involved with the creating of this piece felt it was a very appropriate name considering that it was going to be entered into this year's competition.



### 3 FLOWERS & FEATHERS

*Esperance Photography Group*





# SCHOOLS CATEGORY EXHIBIT



**Exhibition open 9.00am - 4.00pm, 22nd - 26th September**  
St Andrew's Anglican Church, 29 Andrew Street

This year we received entries from 12 schools from across the region:

- Cascade Primary School
- Castletown Primary School
- Esperance Anglican Community School
- Esperance Christian School
- Esperance Education Support Centre
- Esperance Homeschooling Community
- Esperance Primary School
- Norseman District High School
- Nulsen Primary School
- Our Lady Star of the Sea Primary School
- Salmon Gums Primary School
- Scaddan Primary School

Judges will allocate a total of 15 awards, three in each age group (K-PP; Years 1-3; Years 4-6; Years 7-9; Years 10-12).

These awards are sponsored by CBH. The criteria are:

**Theme Award:** for creative and strong links to the Festival theme of bird/plant interactions

**Sustainability Award:** for the innovative use of recycled/upcycled materials

**Technical Skill Award:** for demonstration of strong artistic skill

A People's Choice Award for the best school presentation will also be allocated based on number of votes received during the Festival.

This award is sponsored by Act-Belong-Commit.

All awards will be announced on 26th September.



## Feeling Blue? Act Green!



It seems that watching wildlife shows, exploring parks and gardens, looking at fabulous mountain and ocean views, and getting away from it all to the bush and Pacific island beaches are not only pleasurable, but are actually good for us!

Eminent biologists, psychologists and health professionals are showing that contact with nature — whether through parks, natural bush, pets or farm animals — helps us recover from stress and mental fatigue, helps us relax and puts us in a good frame of mind.

Of course, most of us know this intuitively and it's probably why we are drawn to nature instinctively. We all know that a walk on the beach, down a bush track or in a park is good to clear the head when we feel a little tired or stressed.

So, next time you are feeling like a lift, 'act green': do some gardening, pet the cat or dog, take a walk around the park or head down to the water for some time out.

Better still, don't wait until you're tired or feeling flat. Act green more often. Being in touch with nature makes us feel good, builds good mental health and helps beat the blues. And it's as easy as A-B-C!

**Act:** do some gardening; take a walk around the local park; watch a wildlife documentary; take time to watch the sun set; spend time with pets...

**Belong:** get a group together for a picnic in a natural setting; visit a wildlife sanctuary with friends; join a hiking group...

**Commit:** become a 'civic environmentalist'; join a tree planting group; volunteer to keep your local parks & gardens clean; take up orienteering; learn more about ecology; offer to take a home-bound person out to a park...

**Being active, having a sense of belonging, and having a purpose in life all contribute to happiness and good mental health.**

**P: (08) 9266 4648**

**W: [actbelongcommit.org.au](http://actbelongcommit.org.au)**



# FESTIVAL HIGHLIGHTS

There will be a range of events occurring throughout the 2020 Esperance Wildflower Festival, including:

- Over 500 local wildflower species on display
- Wetland sculpture installation featuring the Australasian Bittern
- Soundscape installations
- Nyungar plants & culture sessions
- Costumes
- Dance
- Art competition & trail
- Artists in residence
- Guest speakers
- Environmental displays
- Workshops
- Light lunches, morning & afternoon tea

**For more details please visit**  
**[www.esperancewildflowerfestival.com](http://www.esperancewildflowerfestival.com)**

## STREET BANNERS

The Shire of Esperance has partnered with the Esperance Wildflower Society (EWS) and Esperance Community Arts (ECA) to produce 28 stunning street banners to celebrate the Festival. These banners feature local species photographed by members of the EWS. The banners were designed by Ken Mills and Jennell Reynolds. Information about each species featured is available on the Esperance Wildflower Festival website.



# FLOWERS & FEATHERS



Australian Government  
Regional Arts Fund

## SOUNDSCAPE PROJECT

In keeping with this year's focus on relationships between birds and plants we invited an ecological sound artist, Perdita Phillips, to work with community members to create local soundscapes to be installed at the Festival along with our community sculptures. Perdita presented a series of free introductory workshops on recording and editing nature sounds to create sound installations that encourage visitors of the Festival to engage with the theme by listening as well as looking. Perdita also presented an artist talk about her professional creative practice and hosted a dawn listening session for World Listening Day.

This project was a partnership with Hope FM.

This project is supported by the Australian Government's Regional Arts Fund delivered in Western Australia by Regional Arts WA.

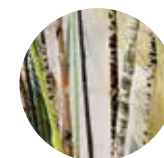


## COMMUNITY SCULPTURE PROJECT



The Flowers & Feathers Community Sculpture Project was facilitated by local artists Mylene van Heijster, Naomi Stanitzki, Jennell Reynolds and Melodie Reynolds. They worked with community members to create a wetland installation that raises awareness of the importance of habitat for the highly endangered Australasian Bittern. Approximately 14 birds are believed to exist in the Esperance region.

This project has been supported by IGO Ltd.



# ACT-BELONG-COMMIT KADDATJI NYUNGAR BOODJA PLANTS AND CULTURE PROGRAM



Esperance Tjaltjraak Native Title Aboriginal Corporation Rangers, in partnership with Esperance Wildflower Society and Esperance Community Arts, are delivering a series of education sessions to local students.

The sessions were run in the lead-up to, and will also take place during, the Festival. They provide primary and high school students with the opportunity to learn about Nyungar Country, including local plants and their cultural uses.



## MEET LOCALS MORE CURIOUS THAN MOST

### CAPE LE GRAND NATIONAL PARK



WANDER OUT YONDER

[WESTERNAUSTRALIA.COM](http://WESTERNAUSTRALIA.COM)



**[www.esperancewildflowerfestival.com](http://www.esperancewildflowerfestival.com)**

*Follow the Esperance Wildflower Festival  
on Facebook and Instagram*

Thank you to all the sponsors of the  
Esperance Wildflower Festival 2020

