

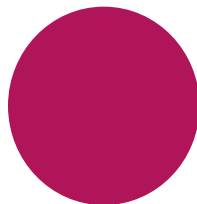
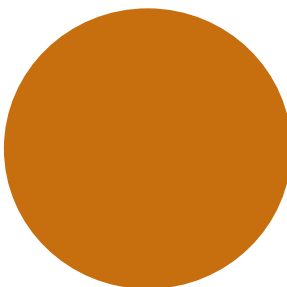


# ESPERANCE

## Wildflower Festival

### ART TRAIL AND EVENT GUIDE

24th - 28th September 2019



Presented by



Esperance Wildflower Society



Anglican Parish of Esperance



Esperance Community Arts

# Welcome to the ESPERANCE WILDFLOWER FESTIVAL 2019

The Esperance Wildflower Festival celebrates the diversity of native flora in our region. Variations, over millennia, in climate, soil composition, and competition with other plants and animals has shaped the evolution of the species we see today. Plants have not been alone on this evolutionary journey. Insects have evolved alongside them—eating them, sheltering in them, hunting in them, sucking their sap and boring into their wood. Plants have fought back, developing poisonous compounds, spines, hairs and waxes to make life more difficult for insect predators. The outcome of this evolutionary 'arms race' is a diversity of insect species as well—and hence our theme for 2019—"Bugs and the Bush".

The Esperance Wildflower Festival began in 1990 as a display of wildflower arrangements organised by the Anglican Parish. Like plants and insects, it has also undergone an evolutionary journey, on a much more rapid timescale! It has grown and changed to accommodate the interests of both visitors and local community groups, taking a more scientific focus, incorporating a range of art forms, and encouraging the involvement of children through educational activities.

2019 has brought some significant changes and new partnerships, including with Esperance Tjaltjraak Native Title Aboriginal Corporation. An Organising Committee consisting of representatives from the Esperance Wildflower Society, Esperance Community Arts and the Anglican Parish has taken responsibility for planning and coordinating the Festival. The Parish has continued to provide catering services and a venue, the Wildflower Society has managed botanical aspects including the collection, identification and display of plant specimens, and Esperance Community Arts has extended the scope of the Festival by sourcing funding for a range of arts projects and marketing initiatives.

Welcome to the Esperance Wildflower Festival 2019. We hope that you will find much to enjoy, and that you will share in our wonder and enthusiasm for the floral diversity that surrounds us.

*Esperance Wildflower Festival Committee*

Day	Events
<b>Daily</b>	<p><b>MegaFLORA Sculptures on display</b> 8.00am - 7.00pm</p> <p><b>Wildflower Display open</b> 9.00 am - 7.00 pm</p> <p><b>Anglican Parish Kitchen open</b> 9.00 am - 4.00 pm</p> <p><b>Children's Craft Activity: Creating insects from plants</b> 9.00am - 4.00 pm</p> <p><b>Natural Soap Making Workshops with Fairymead</b> 1.00 - 2.00 pm (excluding Tuesday) - TBC</p>
<b>Tuesday 24th September</b>	<p><b>Artist in Residence</b> Naomi Stanitzki</p> <p><b>Welcome to Country</b> 12.30 pm</p>
<b>Wednesday 25th September</b>	<p><b>Artist in Residence</b> Carole King</p> <p><b>Esperance Anglican Community School Music Performance</b> 12.30 pm</p>
<b>Thursday 26th September</b>	<p><b>Artist in Residence</b> Kathleen Bowering</p>
<b>Friday 27th September</b>	<p><b>Artist in Residence</b> Colette Annice</p> <p><b>Act-Belong-Commit Art Competition: Schools Category and 100 Word Competition Award Presentations</b> 3.30 pm</p> <p><b>Guest Speaker, Dr Neville Marchant AM</b> <i>"How our wildflowers have evolved with bugs and other bush animals"</i> 5.00 pm - 6.00 pm</p> <p><b>Wine-tasting: Yume Ambrosia</b> <i>Created from Esperance honey by a local wine maker</i> 6.00 pm - 7.00 pm</p>
<b>Saturday 28th September</b>	<p><b>MegaFLORA Parade</b> 10.00 am - 11.00 am</p> <p><b>Act-Belong-Commit Art Competition &amp; Exhibition: Open Category People's Choice Award Presentation</b> 11.00 am</p> <p><b>Artists in Residence</b> Caitlyn Edwards &amp; Kim Maslin</p>

## ESPERANCE WILDFLOWER SOCIETY



The Esperance Wildflower Festival began by displaying wildflowers collected by local farmers. The emphasis then was on making attractive displays rather than conveying scientific information. More recently Esperance Wildflower Society has coordinated the wildflower display, and introduced talks and activities for school groups.

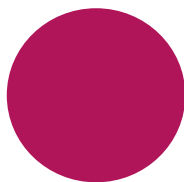
Flower specimens are collected from across the Esperance Shire by licenced collectors. The number of species on display has gradually increased, reaching 555 in 2018. Where possible Nyungar names are included on labels.

The composition of the display differs each year depending on seasonal factors. Collectors don't just focus on the showy flowers – including all kinds demonstrates the diversity of our local flora.

Over 2,500 species occur in the Shire. Many are not in flower at Festival time, so the display represents just a part of the actual diversity.

This year's display will include items relevant to the 2019 theme of 'Bugs and the Bush', including pupal cases from the leaf litter, galls, photos of insects interacting with plants, and mud-dauber wasp nests. A weed section will be included to assist members of the community to identify them as non-native species.

Members of EWS will be present to answer questions. We look forward to meeting you there



Act-Belong-Commit

## ESPERANCE WILDFLOWER FESTIVAL



# ART EXHIBITION & COMPETITION

The Esperance Wildflower Festival Art Competition, previously limited to school-age students, has been extended in 2019 to include an Open category (with two sub-categories, Under 16 and Over 16) thanks to sponsorship from Healthway / Act-Belong-Commit and Southern Ports Authority. People's Choice awards will be presented in all categories.

Artists living in the Esperance region were invited to submit artwork responding to the theme of 'Nature, Bush, Belonging'. This complements the overall Festival theme for 2019 of 'Bugs and the Bush', a celebration of the relationships between local plants and insect species and the focus for the entries in the Schools Category.

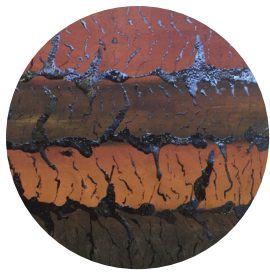
While the entries from the Schools will be displayed in the Anglican Church during the Festival in line with previous years, the entries in the Open Category are displayed in local shops throughout the CBD. This project has helped to raise awareness of, and engagement with, the Esperance Wildflower Festival in the lead-up to the event.

### How to vote for the People's Choice Awards:

The winners of the Open Category will be determined by popular vote. Voting slips can be completed and submitted at most of the participating businesses and at the Festival venue **before 3.00 pm on Friday 27th September**. An award will also be allocated for the best school display in the Schools Category by completing and submitting a voting slip in the Anglican Church.

You are welcome to vote multiple times for different artworks (one vote per person per artwork). An art trail map showing the locations of all the entries in the Open Category, on display from Thursday 12th September, is available at the back of this guide, as well as on the Wildflower Festival website and from participating venues.





## 1 DEVASTATION AFTER THE FIRE: PART 1

Jeanette Aitchison

When a bush fire has devastated the landscape, we look at what it has left us with. In its place is a skeleton without beauty and splendid colour, the gift of nature.

Shop 1, Fenwick 3 Cinema Complex,  
105 Dempster Street



## 2 DEVASTATION AFTER THE FIRE: PART 2

Jeanette Aitchison

This painting relates to devastation after a bush fire. Everything returns to the earth. I used a medium of ground earth and grass tree resin to portray the look of devastation I was after.

12 Andrew Street



## 3 TAMMY ANDREWS

Banksia and Verdicordia

This painting was one of my first oils as an art student over twenty five years ago, and thus began my love of painting the wildflower.

Baxter and Maree  
87A Dempster Street



## 4 BANKSIA WAVING

Colette Annice

My artworks are painted from wildflowers that are local to the Esperance region. "Banksia Waving" is a watercolour of one of Esperance's most beautiful and prolific Banksias.

12 Andrew Street



## 5 HAKEA LAURINA

Colette Annice

My artworks are painted from wildflowers that are local to the Esperance region. "Hakea Laurina" is an acrylic painting showing fine detail of the flower and its importance to our insects.

Beeline Florist  
Shop 1, Dutton Arcade, Andrew Street



## 6 BLOSSOM

Tracey Bareli

My artwork is of the acacia genus, Rigid Wattle. A photo from private collection made into a quilted wall hanging. Silks and cotton fabrics, free motion quilted on a domestic sewing machine.

Create & See  
7 Andrew Street



## 7 PESKY PETE

Tracey Bareli

Pesky Pete is an Eggfruit Caterpillar Moth. Handmade by myself using cotton fabrics. Fabric Pencils used to colour the moth. Quilted on my Bernina sewing machine.

Jen's Stained Glass Creations  
68 Dempster Street



## 8 BEETLEMANIA

Kathleen Bowering

The fabulous designs and colours found on our tiniest insects was the inspiration for my colourful creation.

The Toy Station  
69C Dempster Street



## 9 OH JOY

Kathleen Bowering

I wanted to share the wonderful sight of the "Pinball Haeka" in full colour as seen through the eyes of my local Honey Eaters.

The Deli King Esperance  
22 Andrew Street



## 10 CORKWOOD HAKEA SUBEREA

Elaine Campbell

This piece of hand embroidery was inspired by a trip to the Pilbara in 2018. I took a photo of the stem of a corkwood Hakea Suberea and embroidered it from the photo.

Esperance Shoe Centre  
75-79 Dempster Street



### 11 GLASS VASES

Steve Cooke

Representing the colours of the bush in spring when the wildflowers are in bloom. The vases are hand blown into hollow logs eaten out by termites as shown on display. The textured form changes with each blown vase as the logs burn by the molten glass making each unique

📍 12 Andrew Street, Esperance



### 12 COME AND FIND ME

Caitlyn Edwards

Inspired by a Broadway hit, this piece is comprised of a morning at the arboretum, 106 Photoshop layers and 17 play-throughs of the Hadestown Original Broadway Cast Recording.

📍 Luna and Sage  
Suite 10, 75-79 Dempster Street



### 13 DESERT 'KEYS' AND CO.

Danielle Edwards & Kim Maslin

Using different parts of old computing equipment, this up-cycled art sculpture represents the way technology can help those in the regions feel connected to friends and family.

📍 Esperance Public Library  
Windich Street



### 14 THE SPIRIT OF BELONGING

Danielle Edwards

Created with natural resources chosen for their natural colours and textures. The interior web represents the interconnections of people in regional areas with each other and their natural environment.

📍 Esperance Public Library  
Windich Street



### 15 MY FAVOURITE OVERALLS

Sally Elliott

There's nothing I love more than nature, and in this piece it's a literal embrace of me holding a wild bunch of some beautiful Esperance wildflowers.

📍 Esperance Community Arts  
67 Dempster Street



### 16 RADIATA BLISS

Esperance Home Care Craft Group

A floral masterpiece collaboratively created across various Esperance Home Care groups. Its colourful nature characterises the beauty, diversity and uniqueness that we all appreciate in each other.

📍 Esperance Community Arts  
67 Dempster Street



### 17 FLAT WATTLE

Rhonda Gill

I took the original photo about 35 years ago on the corner of Muntz and Bebenorin roads.

📍 Create & See  
7 Andrew Street



### 18 NORSEMAN LANDSCAPE

Carole King

"Norseman Landscape" is an oil painting depicting the stark eucalyptus and red earth, typical of the Norseman region.

📍 Dempster Sporting  
65 Dempster Street

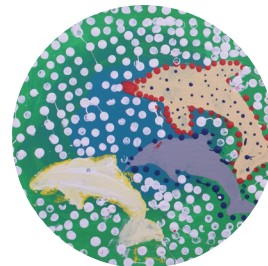


### 19 WILDFLOWERS OF ESPERANCE

Carole King

This is a still life painting in pastels, depicting banksia, bottle-brush, wattle and blue mallee flowers. These flowers are just a few of the hundreds of our stunning flowers.

📍 Shop 1, Fenwick 3 Cinema Complex,  
105 Dempster Street



### 20 DOLPHIN DREAMING

Morgan Knox

Under 16  
category

Dolphins are part of living in Esperance, I love to get to the beach to see dolphins.

📍 Esperance Community Arts  
67 Dempster Street





## 21 EVERLASTING TIME (MURCHISON) Bruce Malloch

One of my favourite areas for painting wildflowers is the Murchison area, with its beautiful carpets of everlastings. Nyngham station always has a magnificent display during the season.

📍 Shop 1, Fenwick 3 Cinema Complex,  
105 Dempster Street



## 22 BREMER BAY FLORA Bruce Malloch

Having lived in the Bremer Bay area for 18 months, I was most impressed with the superb coastal flora in that region.

📍 Esperance Public Library  
Windich Street



## 23 ROO PAW Hugo Manning

Under 16  
category

Bright fire engine red and lime green kangaroo paw flower standing up strong against the crisp blue Esperance sky.

📍 Esperance Community Arts  
67 Dempster Street



## 24 BEAUTY AND THE BEES Jen Morcombe

Fairymead Natural Soap is coloured with red sea Kelp, fresh from the ocean, for enriching skin care. Using local ingredients; seawater, olive oil, herbs, kelp and real essential oils.

📍 Esperance Community Arts  
67 Dempster Street



## 25 LOVE IN THE EUCALYPT Laetitia Müller

Canoodling Pink and Grey Cockatoos are preening each other while building on their lasting relationship in the shade of an Eucalyptus erythrocorys (also known as red-capped gum). Galahs are social and monogamous birds.

📍 SportsPower Esperance  
96 Dempster Street



## 26 NO PLACE LIKE HOME: A GALAH'S PERSPECTIVE Laetitia Müller

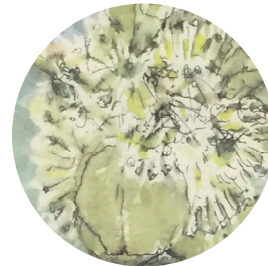
Juvenile galahs feel safe in their hollow nest (acquired with the help of an active ecosystem of termites, fungi and woodpeckers) where these critters will be cared for by their loving parents for a year before they leave the hollow.

📍 Toyworld Esperance  
12 Andrew Street



## 27 HONEY Jeff Mutch

📍 Bob & Jim's General Store  
73 Dempster Street



## 28 EUCALYPTUS - WIRELESS HILL Sally Proudfoot

📍 Secret Wishes  
5 James Street



## 29 GREEN SPIDER ORCHID IS MY HOME Jenniver Smith

Oil on canvas. The irony was immediate when a spider was observed spinning a web illuminated by early morning dew, from this Green Spider Orchid to a bush nearby. Caladenia falcata - also known as the "Fringed Mantis Orchid". References: Photographs taken by my son Eric Smith in the Esperance area.

📍 Dudley Newton Optometrists  
87c Dempster Street



## 30 COASTAL NATURE Speedline Art

Esperance coastal scrub scene in acrylic.

📍 Splash Out Living and Giving  
91 Dempster Street



### 31 PLANET WAVES *Speedline Art*

Earth and nature theme inspired by Esperance coast, in acrylic.

Anything and Everything Esperance  
71 Dempster Street



### 32 BANKSIA. BORN. *Naomi Stanitzki*

An encaustic print made from original drawings depicting Banksia speciosa flowers beginning and ending.

Esperance Community Arts  
67 Dempster Street



### 33 A NATURAL BOUNTY *Lynne Symes*

I painted this artwork after walking around Kings Park in the city.

Esperance Community Arts  
67 Dempster Street



### 34 PEA FLOWER *Mylene Van Heijster*

I have always been attracted to the bright colours, unexpected colour combinations and shapes in plants and flowers. I discovered a whole new world when I immigrated from the Netherlands to Australia!

Break Away Cafe  
105 Dempster Street



### 35 GOLDEN WATTLE *Mylene Van Heijster*

Created with pen and ink, watercolour.

Luna and Sage  
Suite 10, 75-79 Dempster Street

# Feeling Blue? Act Green!



It seems that watching wildlife shows, exploring parks and gardens, looking at fabulous mountain and ocean views, and getting away from it all to the bush and Pacific island beaches are not only pleasurable, but are actually good for us!

Eminent biologists, psychologists and health professionals are showing that contact with nature — whether through parks, natural bush, pets or farm animals — helps us recover from stress and mental fatigue, helps us relax and puts us in a good frame of mind.

Of course, most of us know this intuitively and it's probably why we are drawn to nature instinctively. We all know that a walk on the beach, down a bush track or in a park is good to clear the head when we feel a little tired or stressed.

So, next time you are feeling like a lift, 'act green': do some gardening, pet the cat or dog, take a walk around the park or head down to the water for some time out.

Better still, don't wait until you're tired or feeling flat. Act green more often. Being in touch with nature makes us feel good, builds good mental health and helps beat the blues. And it's as easy as A-B-C!

**Act:** do some gardening; take a walk around the local park; watch a wildlife documentary; take time to watch the sun set; spend time with pets...

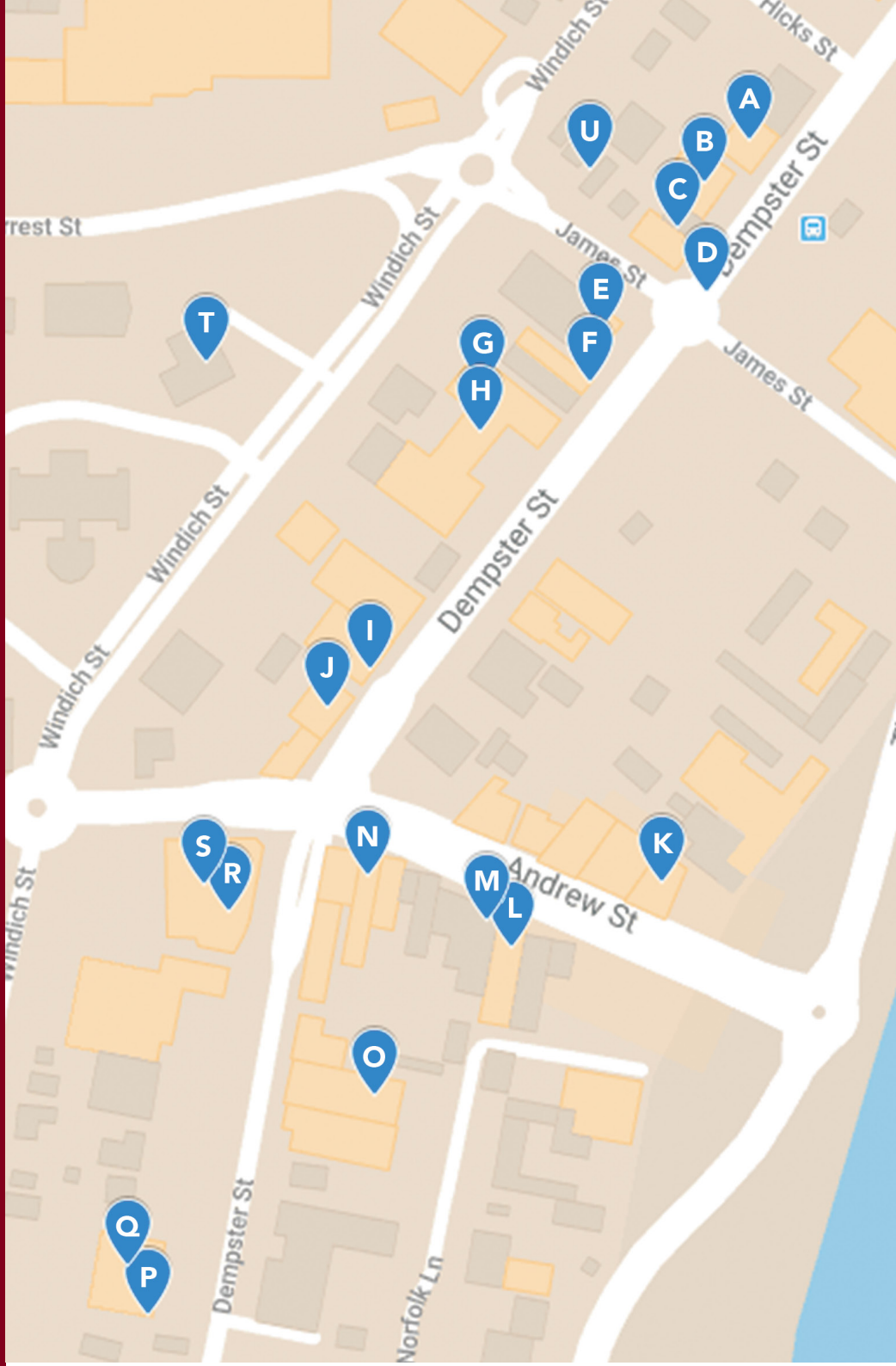
**Belong:** get a group together for a picnic in a natural setting; visit a wildlife sanctuary with friends; join a hiking group...

**Commit:** become a 'civic environmentalist'; join a tree planting group; volunteer to keep your local parks & gardens clean; take up orienteering; learn more about ecology; offer to take a home-bound person out to a park...

**Being active, having a sense of belonging, and having a purpose in life all contribute to happiness and good mental health.**

**P: (08) 9266 4648**  
**W: [actbelongcommit.org.au](http://actbelongcommit.org.au)**





# Act-Belong-Commit

## ART EXHIBITION & COMPETITION

# TRAIL MAP

- A** Dempster Sporting  
65 Dempster Street
- B** Esperance Community Arts  
67 Dempster Street
- C** The Toy Station  
69C Dempster Street
- D** Jen's Stained Glass Creations  
68 Dempster Street
- E** Anything and Everything  
Esperance  
71 Dempster Street
- F** Bob & Jim's General Store  
73 Dempster Street
- G** Esperance Shoe Centre  
75-79 Dempster Street
- H** Luna and Sage  
Suite 10, 75-79 Dempster Street
- I** Baxter and Maree  
87A Dempster Street
- J** Dudley Newton Optometrists  
87c Dempster Street
- K** Create & See  
7 Andrew Street
- L** 12 Andrew Street, Esperance
- M** Toyworld Esperance  
12 Andrew Street
- N** The Deli King Esperance  
22 Andrew Street
- O** SportsPower Esperance  
96 Dempster Street
- P** Shop 1, Fenwick 3 Cinema  
Complex, 105 Dempster Street
- Q** Break Away Cafe  
105 Dempster Street
- R** Splash Out Living and Giving  
91 Dempster Street
- S** Beeline Florist  
Shop 1, Dutton Arcade,  
Andrew Street
- T** Esperance Public Library  
Windich Street
- U** Secret Wishes  
5 James Street





**[www.esperancewildflowerfestival.com](http://www.esperancewildflowerfestival.com)**

*Follow the Esperance Wildflower Festival  
on Facebook and Instagram*

Thank you to all the sponsors of the  
Esperance Wildflower Festival 2019



**Australian Government**  
**Festivals Australia**



Department of Local Government, Sport and Cultural Industries  
Department of Primary Industries and Regional Development

